



Dr Natasha de Vere

Careers in the Field

[@RoyalSocBio](#) | [#BiologyWeek](#) | [#RSBcareersDay](#)



Careers in the Field





Natasha de Vere

Head of Science, National Botanic Garden of Wales and Senior Lecturer, IBERS,
Aberystwyth University

<https://www.linkedin.com/in/natasha-de-vere-780a5625/>

Twitter: @NdeVere @walesbotanic

Website: <https://botanicgarden.wales/>

The National Botanic Garden of Wales

The National Botanic Garden of Wales is dedicated to the research and conservation of biodiversity, to sustainability, lifelong learning and the enjoyment of the visitor.

Saving
pollinators

Saving
plants and
fungi

Science @
the Garden
of Wales

Collections

Science
and
Society





The Science Team

Head of Science

Dr Natasha de Vere (NBGW 75%, IBERS 25%)

PhD researchers

Laura Jones, Abi Lowe, Abdullah Munawar Rafiq (Bangor Uni), Andrew Lucas (Swansea Uni)
Rowan Thomas, Lucy Witter (Aberystwyth University)

Interns

Louisa Smith (Manchester Uni) Rhiannon Dowling (Imperial)

Work experience and science volunteers

A-level to post-graduate.

Library, archive, herbarium, apiary and butterfly house volunteers

Pollergen Project

Growing the Future



Saving Plants and Fungi: Conserving Welsh Plants

- **Science-based action:** we provide an evidence base for the effective conservation of Wales' most threatened plants, fungi and their habitats.
- **In-situ and ex-situ conservation:** conservation genetics, horticultural expertise, National Nature Reserve

Process-Based Species Action Plans: an approach to conserve contemporary evolutionary processes that sustain diversity in taxonomically complex groups

RICHARD A. ENNOS^{1,7}, RAJ WHITLOCK², MICHAEL F. FAY³, BARBARA JONES⁴, LINDA E. NEAVES⁵, ROBIN PAYNE⁶, IAN TAYLOR⁷, NATASHA DE VERE⁸ and PETER M. HOLLINGSWORTH⁵

Issue



Botanical Journal of the Linnean Society
Volume 168, Issue 2, pages 194-203, February 2012

SCIENTIFIC REPORTS

Altmetric 5

More detail >

Article | OPEN

Breeding system and spatial isolation from congeners strongly constrain seed set in an insect-pollinated apomictic tree: *Sorbus subcuneata* (Rosaceae)

Tracey J. Hamston, Robert J. Wilson, Natasha de Vere, Tim C. G. Rich, Jamie R. Stevens & James E. Cresswell

Scientific Reports 7, Article number: 45122 (2017)

Received: 05 December 2016

Accepted: 16 February 2017

Published online: 24 March 2017



Journal of Ecology

Biological Flora of the British Isles: *Cirsium dissectum* (L.) Hill (*Cirsium tuberosum* (L.) All. subsp. *anglicum* (Lam.) Bonnier; *Cirsium pratense* (Huds.) Willd., non Lam.; *Cirsium anglicum* (Lam.) DC.)

NATASHA DE VERE

Plant Biol (2009) 10:223-240
DOI 10.1007/s11293-008-9107-y

Open Access

Demographic vulnerability of the clonal and endangered meadow thistle

Elke Jongejans · Natasha de Vere · Hans de Kroon

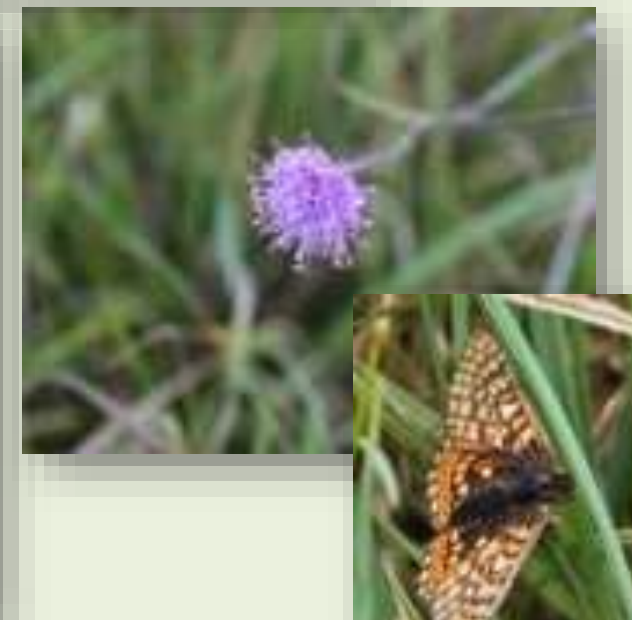
Ecology (2009) 1:39-48
DOI 10.1007/s00442-008-1203-y

POPULATION ECOLOGY · ORIGINAL PAPER



Population size and habitat quality affect genetic diversity and fitness in the clonal herb *Cirsium dissectum*

Natasha de Vere · Elke Jongejans · Amy Plowman · Eirene Williams



Saving Plants and Fungi: Barcode UK and DNA barcoding applications

- DNA barcodes for all the native flowering plants of the UK.
- Using DNA barcoding to investigate pollinator foraging, community ecology and aerobiology.
- Applying DNA barcoding to international conservation problems.



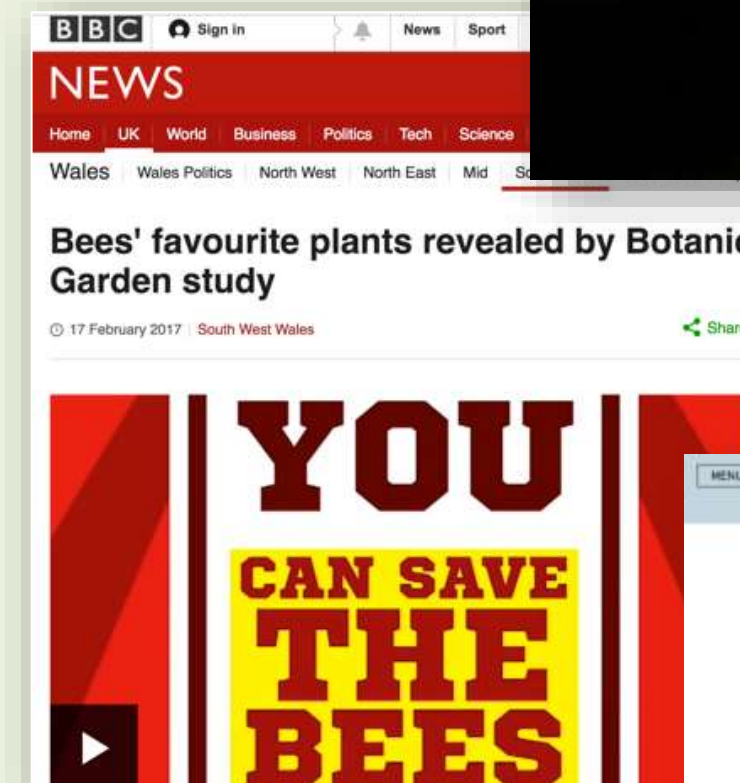
Saving Plants and Fungi: Rainforest Conservation in Borneo

- Investigating rainforest restoration.
- Use DNA barcoding for species identification.
- Aberystwyth University Tropical Ecology Field Course
- Based at the Danau Girang Field Centre, Lower Kinabatangan Wildlife Sanctuary, Sabah.



Saving Pollinators

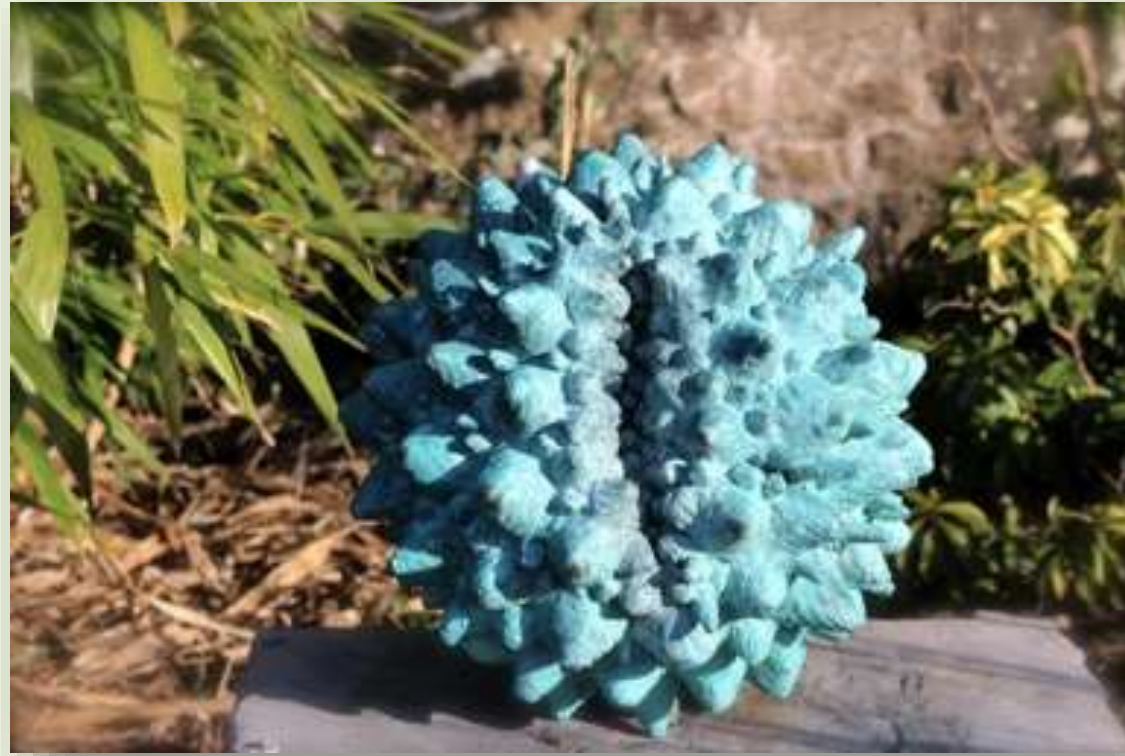
- Investigate foraging preferences and dietary needs of pollinating insects.
- Provide guidance on land management.
- Develop targeted seed mixes and planting plans for landowners and gardeners.



Public Engagement: Bee Garden



Art-Science



PLAS PILIPALA
BUTTERFLY HOUSE

AR AGOR NAWR OPEN NOW

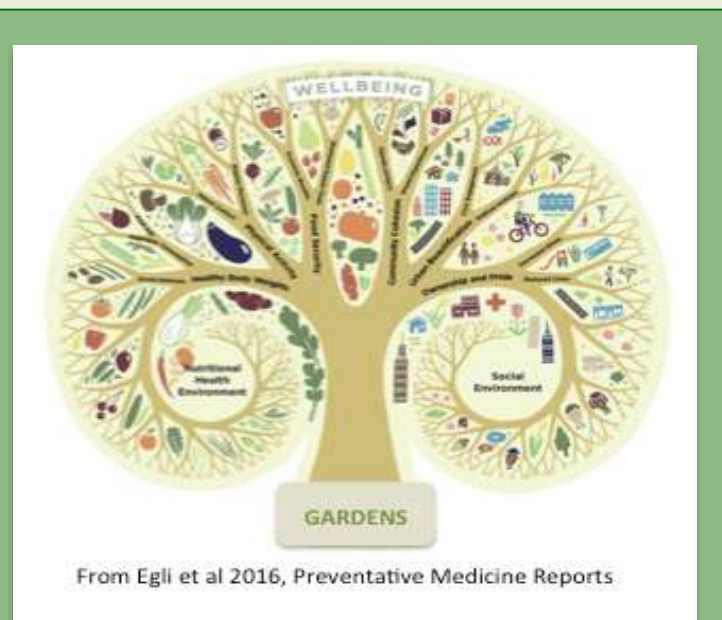
National Botanic Garden of Wales
Gardd Ffotaleg Genedlaethol Cymru



Growing the Future

Promote and develop horticulture in Wales by providing training to individuals and groups from diverse audiences.

Jobs: Project co-ordinator, Finance and admin, Events and marketing, three horticultural and wildlife trainers, Science officer).



Gardens for Health
and Wellbeing



Celebrating Welsh
Horticulture



Horticulture for the
Future



Careers in the Field