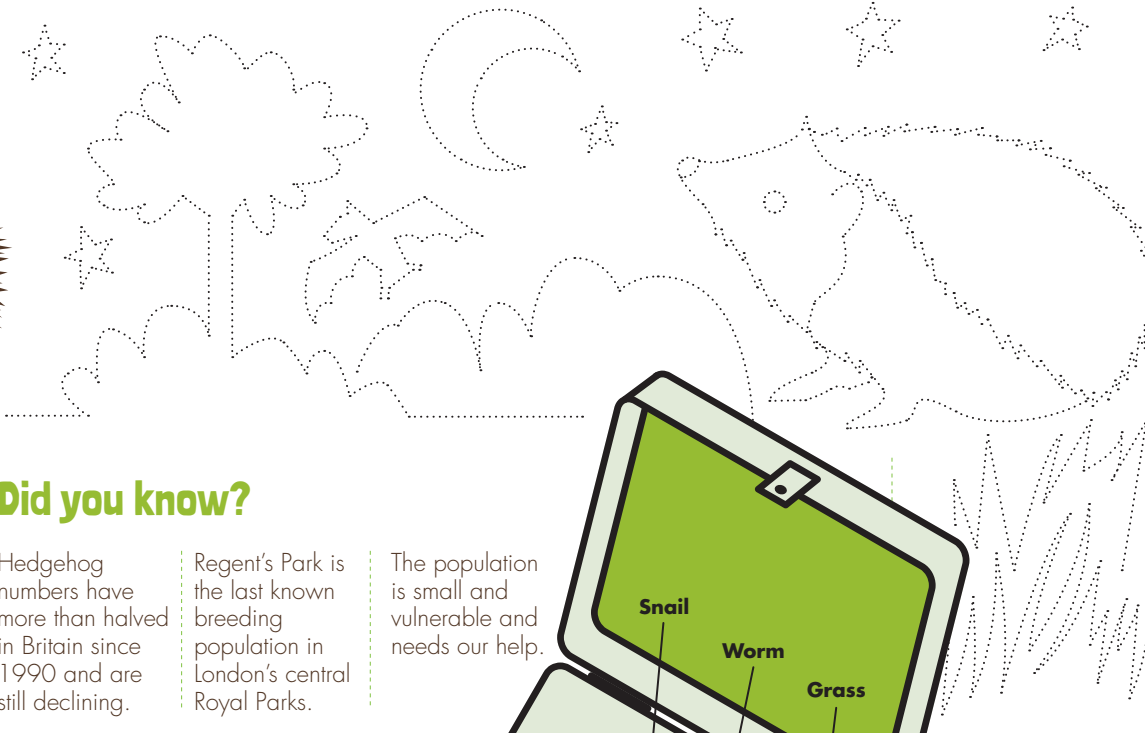


# The Secret Life of Hedgehogs

Help Spike find the safe route to his nest:



Join the dots...



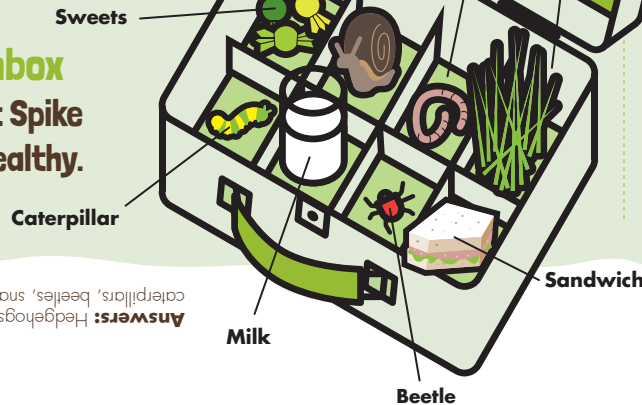
Did you know?

Hedgehog numbers have more than halved in Britain since 1990 and are still declining.

Regent's Park is the last known breeding population in London's central Royal Parks.

The population is small and vulnerable and needs our help.

**Hedgehog Lunchbox**  
Circle the food that Spike must eat to stay healthy.



**Answers:** Hedgehogs are insectivores. They would eat caterpillars, beetles, snails and worms. Milk upsets their tummy!

Spike is lost for words...

Help him find these words in the grid below:

- |        |           |         |
|--------|-----------|---------|
| BETLE  | NEST      | SNORT   |
| FORAGE | NOCTURNAL | SNUFFLE |
| HEDGE  | SLUG      | SPINE   |

S	L	E	T	D	O	J	M	S	F
L	P	S	S	S	H	E	R	O	L
A	U	I	E	S	I	L	R	L	A
N	S	Z	N	B	O	A	W	S	C
R	Y	S	W	E	G	D	E	H	U
U	B	O	L	E	E	A	R	O	T
T	K	M	U	T	R	O	N	S	P
C	U	O	S	L	U	G	W	L	S
O	E	T	O	E	V	S	A	E	T
N	S	Z	S	N	U	F	F	L	E

How many words can you make using the letters in hedgehogs?  
Spike found 50!